



# MENAI STRAIT REGATTAS 2023

## General Conditions & Sailing Instructions



### ***Sportsmanship and the Rules***

*Competitors in the sport of sailing are governed by a body of rules that they are expected to follow and enforce. A fundamental principle of sportsmanship is that when competitors break a rule they will promptly take a penalty, which may be to retire.*

#### **1.0 RULES**

- 1.1 These Regattas will be governed by the “rules” as defined in the Racing Rules of Sailing (RRS).
- 1.2 The Regatta Office is situated in the Royal Anglesey Yacht Club.
- 1.3 Notices to Competitors will be posted on the online official notice board located at [menaistraitregattas.org.uk/notices](http://menaistraitregattas.org.uk/notices). Whenever possible information will also be displayed on the Notice Board situated in the RAYC, the Regattas Facebook page and distributed by text message.
- 1.4 Any change to sailing instructions will be posted on the official notice board not later than 2 hours before the start of the race to which they apply.
- 1.5 The term ‘Race Committee’ is the Race Committee of the host club for that day. The term ‘Race Officer’ means the Race Officer for any Regatta or his duly authorised representative.

#### **2.0 CONDITIONS OF ENTRY**

##### **2.1 General – Risk Statement**

Rule 3 of the Racing Rules of Sailing states: “The responsibility for a boat’s decision to participate in a race or to continue racing is hers alone.”

Sailing is by its nature an unpredictable sport and therefore inherently involves an element of risk. By taking part in the event, each competitor agrees and acknowledges that.

- (a) They are aware of the inherent element of risk involved in the sport and accept responsibility for the exposure of themselves, their crew and their boat to such inherent risk whilst taking part in the event.
- (b) They are responsible for the safety of themselves, their crew, their boat and their other property whether afloat or ashore.
- (c) They accept responsibility for any injury, damage or loss to the extent caused by their own actions or omission.
- (d) Their boat is in good order, equipped to sail in the event and they are fit to participate.
- (e) The provision of a race management team, patrol boats and other officials and volunteers by the event organiser does not relieve them of their own responsibilities.
- (f) The provision of patrol boat cover is limited to such assistance, particularly in extreme weather conditions, as can be practically provided in the circumstances;
- (g) It is their responsibility to familiarise themselves with any risks specific to this venue or this event drawn to their attention in any rules and information produced for the venue or event and to attend any briefing held for the event;
- (h) Their boat is adequately insured, with cover of at least £3,000,000 against third party claims.

## 2.2 Handicap

**2.2a** For **Fleets 1 & 3** the NHC base list will be used. A boat's handicap will not be adjusted after every race. An adjustment in handicap number is not grounds for redress, this changes RRS 62.

For Fleets 1 & 3 the Race Committee, reserves the right to change which fleet an entry will compete in. For scoring purposes it will retain its Base Number.

**2.2b** For **Fleet 2** the MOCRA rating system will be used.

**2.2c** For **Fleets 13 & 14** the RYA Portsmouth Number (PN) List 2023 will be used. Boats without published PN will be allocated PN by the Race Committee.

**2.3** **Sail Numbers** - Competitors should ensure that lost or damaged numbers are replaced and should inform the Race Officer if they intend to sail with a different sail number to that declared on their entry.

## 3.0 SCHEDULE OF REGATTAS

**3.1** For each race the time of the warning signal for start 1 is shown below. Subsequent starts will be at 5 minute intervals.

**3.2** The warning signal for start 0 (Fleets 1 and 2) will be 15 minutes before the time shown for start 1.

### 3.3 WEEK 1

Date	Regatta	Warning Signal	Start Line	HW
Mon 31 <sup>st</sup> Jul	Royal Dee Yacht Club	11.55	Beaumaris	10:20
Tue 1 <sup>st</sup> Aug	Bangor Town 1 <sup>st</sup> Race	10:55	Beaumaris	11:13
	Bangor Town 2 <sup>nd</sup> Race	13:25	Gazelle	
Wed 2 <sup>nd</sup> Aug	Race Through	08.55	Beaumaris	12:02
Thu 3 <sup>rd</sup> Aug	Royal Welsh YC - Seiont	10.25	Caernarfon	11:54
Fri 4 <sup>th</sup> Aug	Royal Welsh YC – Cadnant	11.25	Caernarfon	12:37
Sat 5 <sup>th</sup> Aug	Port Dinorwic RC	12:55	Y Felinheli	13:43

### 3.4 WEEK 2

Date	Regatta	Warning Signal	Start Line	HW
Mon 7 <sup>th</sup> Aug	Menai Bridge BC	10:55	Beaumaris	15:58
Tue 8 <sup>th</sup> Aug	Beaumaris Town	09.25	Beaumaris	16:51
Wed 9 <sup>th</sup> Aug	Hoylake SC	11:55	Beaumaris	17:52
Thu 10 <sup>th</sup> Aug	Royal Mersey YC	10.55	Beaumaris	19:02
Fri 11 <sup>th</sup> Aug	Conway YC	11:55	Beaumaris	07:37
Sat 12 <sup>th</sup> Aug	Royal Anglesey YC	11:55	Beaumaris	08:51

**3.5** When AP over L is displayed the venue and start time of the race may be changed, please see the notice on the website or contact one of the patrol boats for details.

#### 4.0 ENTRY

4.1a All competitors, including late entrants, shall complete an online entry or a paper entry form before the race concerned.

4.1b Late entries must be received by 1 hour prior to the start of their race, and if made on the day of the race, must be made online or at the starting line. (Dispensation may be given for valid reasons.)

4.1c Competitors **under 18** shall obtain the approval of a parent or guardian for their entry.

#### 4.2 ENTRY FEES

##### 4.2a Up to 16<sup>th</sup> July 2023:

###### Fleet

12 days

Any 6 days

1-5 days & extra days over 6

1 to 12	13 & 14	age<18
£160	£80	£48
£107	£53	£32
£21/day	£11/day	£6/day

##### 4.2b After 16<sup>th</sup> July 2023:

###### Fleet

12 days

Any 6 days

1-5 days & extra days over 6

1 to 12	13 & 14	age<18
£176	£88	£53
£118	£59	£35
£23/day	£12/day	£7/day

#### 5.0 SAFETY

5.1a **Personal Floatation – Note:** The Regatta Committee consider conditions on the Menai Strait require a personal ‘floatation device’ & advise that it is worn by all competitors in boats.

5.1b RRS 40.2 will apply.

5.1c When using any of the club launches personal floatation shall be worn by all competitors.

5.2 **Patrol Boats** - Competitors are reminded that the primary duty of patrol boats is to save lives. Patrol boats must not be detained to stand by capsized boats when needed elsewhere for rescue work. The Regattas Committees of the organising Club or Regatta, do their best to provide adequate patrol boats and facilities. This does not mean that a patrol boat will be available for every emergency and the helmsman and crew of every boat must decide upon their own responsibility whether to sail or not, and if they do, to accept all risks. Competitors, patrol boats and the Safety Officer will listen out on Channel 37/M1.

5.3 All boats may be subject to scrutiny.

5.4 **Signing on and off** – Competitors in **Fleets 13 & 14** shall sign on before the start of their race and sign off within 45 minutes of the last boat in their race finishing (unless extended by the Race Officer), otherwise they will be scored DNC (Did not Compete); this amends RRS A5.

The signing on/off point will be at or near the Start/Finish Line.

## 6.0 STARTING SIGNALS, RACE NUMBERS AND FLEET FLAGS

### 6.1 Starting Signals

6.1a Starting signals will be in accordance with RRS 26

6.1b For Regattas with 2 races when flag N over C is displayed ashore the first race of that day is abandoned and will not be resailed. The second race will go ahead unless otherwise signalled. (Amends RRS Race Signals)

6.1c After a long postponement to alert boats that a race or sequence of races will begin soon; an orange flag will be displayed for at least five minutes, with one sound, before a warning signal is displayed. See RRS Appendix S 5.2.

6.1d The target times for races shall be **3 hours**.

### 6.2 Display of Code Flags

All boats in Fleets 1, 2 and 3 shall display their code flag on their backstays whilst racing.

### 6.3 Start sequence & Code Flags for Fleets

Start	Fleets		Flag
0	1 & 2	Cruiser, Handicap NHC>0.81* Cruiser - Multihull -----	Num 1 & Num 2
1	4	Falcon One Design -----	B
2	6	Royal Anglesey Fife -----	F
3	5 & 7	Royal Mersey Mylne Conway One Design -----	E & G
4	8	Menai Strait One Design -----	J
5	9 & 10	Hilbre Island One Design SeaBird Half Rater -----	K & M
6	11 & 12	Hoylake Opera West Kirby Star -----	Q & R
7	13 & 14	Handicap Dinghy PN>=1178 Handicap Dinghy PN<1178 -----	T & W
8	3	Cruiser, Handicap NHC<=0.81*	Num 3

Notes:

The split point between Fleet 1 & Fleet 3 is:

Fleet 1: NHC above 0.81 and longer than 6.5 meters

Fleet 3: NHC up to 0.81 or shorter than 6.5 meters

For all regattas the warning signal for start 0 (Fleets 1 and 2) will be 15 minutes before the time shown for start 1.

At Y Felinheli/Port Dinorwic Fleets 13 & 14 will have separate starts 5 minutes apart followed Start 8.

## 6.4 Alternate Start Sequence for Beaumaris Town Regatta, and Race To Caernarfon.

Start	Fleets		Flag
0	1 &	Cruiser, Handicap NHC>0.81*	Num 1 &
	2	Cruiser - Multihull	Num 2
-----			
1	3 &	Cruiser Keelboat NHC<=0.81*	Num 3 &
	13	Handicap Dinghy PN>=1178	T
-----			
2	10 &	Seabird Half Rater	M &
	11 &	Hoylake Opera	Q &
	12	West Kirby Star	R
-----			
3	8 &	Menai Strait One Design	J &
	9	Hilbre Island One Design	K
-----			
4	5 &	Royal Mersey Mylne	E &
	7	Conway One Design	G
-----			
5	4	Falcon One Design	B
-----			
6	14	Handicap Dinghy PN<1178	W
-----			
7	6	Royal Anglesey Fife	F
-----			

## 7.0 COURSES

**7.1** General instructions for the courses at each venue are contained in the Marks and Courses section and apply to all Fleets 1 to 14.

**7.2** The course for **Fleets 1 to 12** will be indicated by means of course boards displayed at the Start Line showing a numeral from 1 to 18 or the letter X. The numeral course boards refer to the course configuration and description for the particular venue as set out in Marks and Courses. When X is displayed the course will be defined according to the method explained in the Beaumaris Marks and Courses. The course boards will be displayed before the Warning Signal of the race and may change between starts. **NOTE:** The course with the same number may not be the same for each fleet.

**7.3** The course for **Fleets 13 & 14** will be displayed at the signing on point.

**7.4 RACE THROUGH** - No course or course boards will be displayed. The course for all fleets is given on The Race Through Course Page

## 7.5 START AND FINISH LINES

**7.5a** The Start and Finish Lines for each venue are defined in 'Marks and Courses'.

**7.5b** Competitors shall, before their preparatory signal and after completing their course keep clear of all boats and of **the start and finish lines**.  
Offending boats may be protested by the Race Officer.

## **8.0 SHORTENED COURSE (Amending RRS 32 and Race Signals)**

**8.1** General: When “S” is displayed alone it applies to all Fleets

**8.2** **Fleet flags** will be used to shorten courses for the individual fleets as normal regatta practice. Fleet flags may be displayed under the flag S or on an adjacent halyard [when shortening this allows a different halyard to be used instead of all flags on one hoist].

**8.3** If “S” over “Z” is displayed in the vicinity of a mark of the course, boats should round that mark and proceed to the FL.

**8.4** The race committee has the option to shorten course between a rounding mark, passing mark or an orange pencil buoy laid for that purpose and a boat staff displaying flag “S”.

**8.5** Race to Caernarfon - When code flag “S” is displayed accompanied by two sound signals from the Finishing lines at 1] Menai Bridge or 2] Y Felinheli then the race is shortened to the line defined in 1] the Menai Bridge courses or 2] the Port Dinorwic Sailing Club standard finishing line.

In case 1] for reasons of safety all boats should expect to wait near Menai Bridge Pier, in readiness to be towed to Caernarfon, they should not continue into the Swellies unless directed by a safety boat.

In case 2] all boats should expect to wait for a tow by the safety boat unless in the individual boat’s skipper decides that it is safe to proceed alone to Caernarfon.

## **9.0 TIME LIMITS (Amending RRS 35)**

**9.1** **Time Limits – All Fleets:** The time limit for each race will be FOUR HOURS, provided that when the first boat finishes within the time limit, the time limit will be extended by one hour. Boats which have not finished within the time limit will be scored DNF (Did Not Finish). If no boat crosses the finish line within the time limit, the Race Officer may at his discretion place and award prizes in the order in which they last crossed the line, provided they are still making all reasonable effort to sail their course.

**9.2** The time limit will be **five hours** for the Beaumaris Town Regatta on the Round Puffin Island Races only. The same time limit extension as SI 9.1 will apply.

**10.0 RETIREMENT** - Helmsmen shall report their retirement to the Race Officer within 90 minutes of the finish of their race.

## **11.0 PENALTIES and PROTESTS**

**11.1** For Fleet 7 ONLY the Two Turn Penalty will be replaced by a One Turn Penalty, this amends RRS 44.1

**11.2** Details and time of protest hearings will be posted on the official notice boards in the RAYC and the Regatta Website. No other notification will be given.

### **11.3** **Protests (Amending RRS 61.3)**

For the purpose of RRS 61.3 formal Protest in writing shall be delivered to the Regatta Office within 2 hours of arriving on shore. The protest committee will extend this time limit to a maximum of 6 hours only if the delay is due to the need to return from a remote venue.

## **12.0 PRIZES**

**12.1** Prizes for **Fleets 1 to 12** will be awarded daily as follows :-

To the winning boat in each fleet.

2nd prize if 3 or more starters.

3rd prize if 5 or more starters.

**12.2** Prizes for **Fleets 13 & 14**

1st, 2nd & 3rd prizes will be awarded in each fleet.

**12.3** If 6 or more boats of one class sail in Fleets 1, 2, 3, 13 or 14 they shall rank as a fleet-within-a-fleet with separate prizes.

**12.4** **NOTE - All trophies and prizes must be collected; they cannot be posted.**

**13.0** **SAIL OVER** - In any fleet, on any day when only one boat from a fleet starts a race, a sail over may be awarded and the boat shall qualify for a prize and any relevant daily trophy. Series points will also be awarded.

## **14.0 SCORING**

**14.1** Scoring will be in accordance with RRS Appendix A. A5.3 will apply (scoring of boats that came to the starting area).

**14.2a** The results of the Menai Strait Regatta series shall be based on the results of the 12 daily Regattas listed in SI 3. Using RRS Appendix A2.1

**14.2b** When a Daily Regatta has more than 1 race the results of those races shall be combined as a series using RRS Appendix A2 with no discard. This series result shall be used to determine the prize winners for that daily regatta and for the Menai Strait Regatta Series results. A boat that does not start will be awarded points as per Appendix A5.2.

**14.2c** For **each Weekly Series** 1 discard will be permitted after 4 races.

**14.2d** For **the Fortnightly Series** 1 discard will be permitted after 4 races, 2 after 7 races and 3 after 9 races.

**14.3** **Particular Trophies** - Particular trophies are awarded using the applicable scoring systems. For further information (not listed below) contact the Regatta Office.

### **14.4 Series Scoring Variations**

Fleet 4: Fred Falcon is scored Saturday to Saturday as a weekly series.

Fleet 5: Mylne series are scored without discards.

Fleet 11: Opera

- Each weekly series – a second discard will be permitted after 6 races.
- The fortnight series will be scored with a maximum of 6 races to count.
- DNF or RET will scored points for the finishing place equal to the number of boats that came to the starting area (amends RRS A5.3).

**15.0** Exclusion Zone off Plas Menai: No boat shall sail in a zone bounded by a line of outer moorings and ninety degrees to Plas Menai shore from each end.

**16.0** All chartlets are for Guidance only and NOT to be used for Navigation purpose.

# MARKS AND COURSES

## General Abbreviations

- FL** = Finish Line  
**(p)** = Leave or pass to Port  
**(s)** = Leave or pass to Starboard  
**SL** = Start Line  
**LM** = Limit Mark

NOTE: Green Channel Buoys are odd numbers, Red Buoys are even.

## BEAUMARIS MARKS

### Marks & Buoys

- LM** = Two Orange limit marks or buoys off the start line  
**10ft** = 10ft Bank Buoy (Channel Buoy)  
**Din** = Dinmor Buoy (Channel Buoy)  
**A** = Aber (Blue Barrel)  
**BO** = Bangor Outfall Buoy [yellow]  
**C** = Cadnant (Blue Barrel)  
**F** = Fryars Bay (Green Conical Outfall Buoy)  
**G** = George (Blue Barrel)  
**H** = Hwfa (Blue Barrel)  
**K** = Castle (Blue Barrel)  
**M** = Magdalene (Blue Barrel)  
**N** = Nwy (Orange Marker Buoy for Gas Co.)  
**O** = Ogwen (Blue Barrel)  
**PI** = Puffin Island  
**PM** = Penrhyn Mussel (Yellow Navigation Post)  
**PP** = Penmon Perch  
**PS** = Penmaen Swatch (an inflatable orange or yellow mark)  
**TPS** = Through Puffin Sound (a gate as a line between the Lighthouse and the perch)  
**WK** = Wreck (an inflatable orange or yellow mark)  
**TR** = Trecastell (an inflatable orange or yellow mark)

***When X is displayed the course will be indicated by a series of numbers and/or letters to be read from left to right, indicating the buoys and racing marks to be rounded in the order displayed and as per their colour, red left to port and green to starboard and the race shall be four laps.***

**All marks shall be left to Starboard unless otherwise stated.**

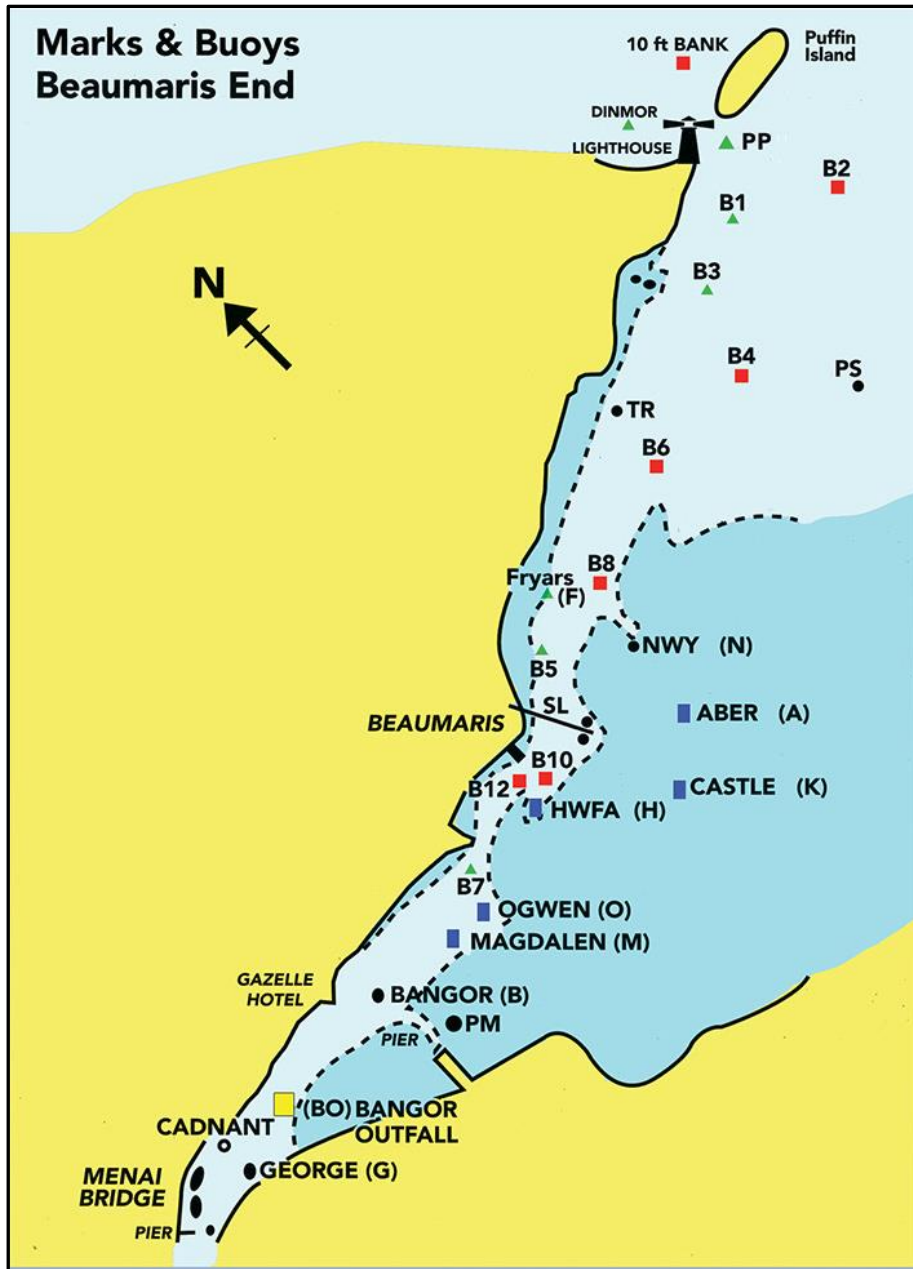
### START AND FINISH LINES - BEAUMARIS

**Start and Finish** Line shall be a prolongation of an imaginary line formed by two flagpoles, in transit, on Beaumaris Green and limited by two orange marks (LM) moored in the Swatchway approximately on the transit line. The two orange marks at the start and finish, the courseward limit mark shall apply and shall be passed on the Anglesey side

When a leg of a course is between two marks on opposite sides of the start/finish transit it shall pass to the Anglesey side of the limit marks except where the course states otherwise.



# Marks & Buoys Beaumaris End



# BEAUMARIS

## Marks and Courses

### COURSE 1

1 & 2	X Course	
4 to 6 inc.	SL, B3(p), B7, B6(p), B10, FL	12.0 NM
7, 8 & 9	SL, B3(p), O, F(p), B12, FL	9.5 NM
3, 10 to 12 inc.	SL, B6(p), M, B8(p), B10, FL	8.5 NM

### COURSE 2

1 & 2	X Course	
4 to 6 inc.	SL, B8(p), O, B8(p), O, FL	8.0 NM
7, 8 & 9	SL, B8(p), B12, F(p), B12, FL	5.5 NM
3, 10 to 12 inc.	SL, B8(p), B10, B8(p), B10, FL	4.5 NM

### COURSE 3

1, 2, 4 to 9 inc.	SL, M, then passing LM to p, B4(p), FL	9.6 NM
3, 10 to 12 inc.	SL, O, then passing LM to p, B6(p), FL	7.9 NM

### COURSE 4

1, 2, 4 to 9 inc.	SL, B4, then passing LM to s, M, FL	9.6 NM
3, 10 to 12 inc.	SL, B6, then passing	
LM to s, O, FL	7.9 NM	

### COURSE 5

1 & 2	X Course	
4 to 6 inc.	SL, BO, B8(p), BO, B8(p), FL	11.5 NM
7, 8 & 9	SL, M, B8(p), O, B8(p), FL	8.0 NM
3, 10 to 12 inc.	SL, M, B8(p), B12, B8(p), FL	7.0 NM

### COURSE 6

1, 2, 4 to 9 inc.	SL, H(p), K(p), & passing LM to p, B6(p), FL	6.2 NM
3, 10 to 12 inc.	SL, H(p), passing LM & A to p, B8(p), FL	5.6 NM

### COURSE 7

1, 2, 4 to 6 inc.	SL, M, B6(p), O, B8(p), FL	9.5 NM
7, 8 & 9	SL, O, F(p), B12, F(p), FL	6.5 NM
3, 10 to 12 inc.	SL, O, F(p), B10, B8(p), FL	6.0 NM

### COURSE 8

1 & 2		
4 to 6 inc.	SL, B6(p), O, B6(p), O, FL	10.5 NM
7, 8 & 9	SL, B6(p), B12, F(p), B12, FL	7.0 NM
3, 10 to 12 inc.	SL, B6(p), B10, B8(p), B10, FL	6.0 NM

### COURSE 9

1 & 2	X Course	
4 to 6 inc.	SL, B2(p), B10, B1(p), FL	13.0 NM
7, 8 & 9	SL, B2(p), B10, B6(p), FL	10.4 NM
3, 10 to 12 inc.	SL, B6(p), B10, B6(p), FL	7.8 NM

<b>COURSE 10</b> 1 & 2 3 to 12 inc.	<b>(Special Course for Beaumaris Town Only)</b> SL, passing B2 to(s) TPS, Din, 10ft, TPS, FL SL, passing B2 to(s) TPS, Din, 10ft, then round Puffin Island, passing B6 to(p) FL	9.5 NM
<b>COURSE 11</b> 1 to 12 inc.	<b>(Special Course for Beaumaris Town Only)</b> SL, passing B2 to(s) TPS passing Penmon Perch & Puffin Island all to Starboard, passing B6 to(p), FL	8.5 NM
<b>COURSE 12</b> 1 & 2 3 to 12 inc.	<b>(Special Course for Beaumaris Town Only)</b> SL, passing B2 to(s) TPS, Din, 10ft, TPS, FL SL, passing B2 to(s) TPS passing Penmon Perch & Puffin Island all to Starboard, passing B6 to(p), FL	9.0 NM 8.5 NM
<b>COURSE 13</b> 1 to 12 inc.	<b>(Special Course for Beaumaris Town Only)</b> SL, passing B4 to(s), passing Penmon Perch to (p), Puffin Island (p), passing B6 to(p), FL	8.5 NM
<b>COURSE 14</b> 1 to 12 inc.	SL, H(p), K(p), passing LM to (p), A(p), F(p), FL x 4Laps	2.3 NM/lap
<b>COURSE 15</b> 1 to 12 inc.	SL, O, passing LM to (p), N(p), F(p), FL x 4Laps	4.1 NM/lap
<b>COURSE 16</b> 1 to 12 inc.	SL, F, A, passing LM to s, K, H, FL x 4 Laps	2.3 NM/lap
<b>COURSE 17</b> 1 & 2 3 to 12 inc.	SL, B6(p), O, FL x 3 Laps SL, N(p), F(p), B7, FL x 4 Laps	



# MENAI BRIDGE

## Marks and Courses

- C** = Cadnant (Blue Barrel)  
**G** = George (Blue Barrel)  
**M** = Magdalene (Blue Barrel)  
**O** = Ogwen (Blue Barrel)  
**TM** = Turning Mark at Menai Bridge  
**B** = Bangor Pier Navigation Buoy [Red]  
**F** = Fryars Bay (Green Outfall Buoy)  
**BO** = Bangor Outfall Buoy [yellow]  
**PM** = Penrhyn Mussel (Yellow Navigation post)  
**FL & SL** = RAYC Start & Finishing line as described on page 8

### START AND FINISH LINES

The Start and Finish Lines shall as Beaumaris [Page 8 above]

The **Turning Mark [TM]** shall be a dinghy containing a large Orange Buoy and its mooring located off Menai slipway.

**All marks shall be left to Starboard except at the start, unless otherwise stated.**

#### COURSE 1

1 & 2	X Course	14.8nm
4, 5 & 6 .	SL, C(p), O, B, 8, FL	9.5nm
7, 8 & 9	SL, BO, 7, M(p), 8, FL	7.0nm
3, 10, 11 & 12	SL, M, 7, M, 8, FL	5.4nm

#### COURSE 2

1 & 2	X Course	? nm
4, 5 & 6	SL, B8(p), BO, 5(p), O, FL	9.6nm
7, 8 & 9	SL, B8(p), M, 5(p), 7( FL	7.0nm
3, 10 11 & 12	SL, N, O, 5(p), 12, FL	6.3nm

#### COURSE 3

1 & 2	X Course	? nm
4, 5 & 6	SL, B, N, 12, N, FL	6.4nm
7, 8 & 9	SL, M, N, 7, FL	5.2nm
3, 10, to 12 inc.	SL, O, N, 7, FL	4.8nm

#### COURSE 4

1 & 2	X Course	? nm
4, 5 & 6	SL, N, B, N, 12, FL	6.4nm
7, 8 & 9	SL, N, M, N, 12, FL	5.2nm
3, 10 to 12 inc.	SL, N, O, N, 7, FL	4.8nm

#### Course 5

1 to 6 inc.	SL, C(p), 8, BO, N(p), FL	13.0 nm
3, 7 to 12 inc.	SL, BO, 8, M, N(p), FL	10.4 nm

# THE RACE THROUGH

## Beumaris to Caernarfon

### START AND FINISH LINES .....FLEETS 1 - 12 INCLUSIVE

**The Start Line** at Beumaris shall be a prolongation of an imaginary line formed by two flagstaff's on Beumaris Green. In Beumaris Swatchway approximately on the Start/Finish Line two 'Limit' Buoys shall be moored. The Courseward only mark shall be passed on the shoreward (Beumaris) side at the start.

**The Finish Line** at Caernarfon shall be the prolongation of an imaginary line between two Orange Triangles on the Royal Welsh Yacht Club Barbican .

### COURSES

#### FLEETS 1 - 12 inclusive

From Start Line at Beumaris south-westerly through the Menai Strait to the Finish Line at Caernarfon passing Green Conical Buoy C9 to starboard. [11.5nm]

**Shortened Course** - If code flag 'S' is displayed accompanied by two sound signals see SI 9.6

### SPECIAL CONDITIONS

#### 1. SPINNAKERS

Spinnakers shall not be flown in the Swellies between the Suspension Bridge and Britannia Bridge.

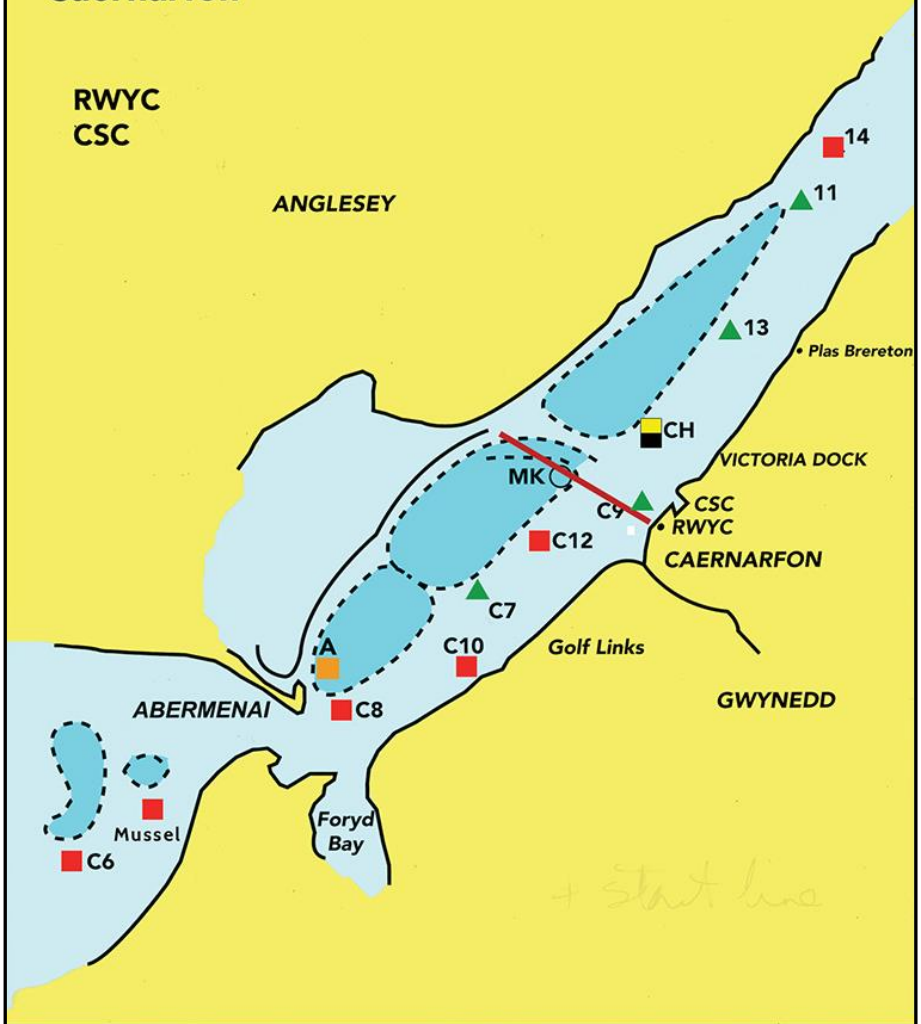
#### 2. RETIREMENTS (Amending Sailing Instruction 12)

Retirements shall be reported to the Race Officer at Caernarfon as soon as possible and immediately on coming ashore, in person, by radio on Channel 37/MI or by phone to Caernarfon (01286) 672599. [RWYC] or mobile No's on 'Races to Caernarfon' Day Page

**3. Exclusion Zone off Plas Menai:** No boat shall sail in a zone bounded by a line of outer moorings and ninety degrees to Plas Menai shore from each end (see SI 16)

# Marks & Buoys Caernarfon

RWYC  
CSC



# CAERNARFON

## Marks and Courses

- CH** = Yellow and Black Change Buoy off Victoria Dock
- C6** = Red Buoy C6 beyond Belan Gap
- C7** = Green Buoy C7 off Golf Course
- C8** = Red Buoy C8 near Aber Menai
- No9** = Green Buoy No9 (off Plas Llanfair)
- C10** = Red Buoy
- C11** = Green Buoy 11
- C13** = Green Buoy 13 opposite Plas Brereton
- C14** = Red Buoy 14 opposite old Ferodo Factory
- C9** = Green Buoy near start line
- A** = *Orange buoy laid off Aber Menai (approx. 53° 08'N 04° 19'W)*

**Exclusion Zone off Plas Menai:** No boat shall sail in a zone bounded by a line of outer moorings and ninety degrees to Plas Menai shore from each end. [see SI 16]

### START AND FINISH LINES

The Start and Finish Lines shall be the prolongation of an imaginary line between two Orange Triangles on the Royal Welsh Yacht Club Barbican and limited by two orange outer Limit Marks and one inner Limit Mark, [inshore of Green Buoy C9], all moored approximately on the transit. The two outer marks on the Anglesey side of the channel, at the start and finish, the courseward mark shall apply and be passed on the mainland side.

Green Buoy C9 and the Red Perch on the Porth Yr Aur slipway, although close to the Start Line, are not part of it.

When a leg of a course is between two marks on opposite sides of the start/finish transit it shall pass to the Gwynedd side of the limit marks except where the course states otherwise.

**All other marks shall be left to Starboard unless otherwise stated.**

#### COURSE 1

1 to 6 inc.	SL, C8, CH, C10(p), CH, FL	6.4nm
7, 8 & 9	SL, A, CH, C10(p), CH, FL	6.2nm
3, 10, to 12 inc.	SL, C10(p), CH, C7(p), CH, FL	4.8nm

#### COURSE 2

1 to 6 inc.	SL, C13(p), C8, FL	5.4nm
7, 8 & 9	SL, C13(p), A, FL	5.2nm
3, 10, to 12 inc.	SL, C13(p), C7(p), FL	3.8nm

#### COURSE 3

1 to 6 inc.	SL, C8, CH, C8, CH, FL	7.6nm
7, 8 & 9	SL, A, CH, C7(p), CH, FL	5.8n3
3, 10, to 12 inc.	SL, A, CH, C7(p), CH, FL	4.8nm



**COURSE 4**

1 to 6 inc.	SL, C13(p), C8, CH, C7(p), FL	7.6nm
7, 8 & 9	SL, C13(p), C10(p), CH, C7(p), FL	6.4nm
3, 10, 11 & 12 inc	SL, C13(p), C7(p), CH, C12, FL	5.4nm

**COURSE 5**

1 to 6 inc.	SL, C8, C13(p), C8, CH, FL	9.3nm
7, 8 & 9	SL, A, CH, C10(p), CH, FL	6.2nm
3, 10, 11 & 12 inc	SL, A, CH, C7(p), CH, FL	5.8nm

**COURSE 6**

1 to 6 inc.	SL, C13(p), C8, CH, C8, FL	9.2nm
7, 8 & 9	SL, C13(p), A, CH, C7(p), FL	7.4nm
3, 10, 11 & 12 inc	SL, C13(p), C10(p), CH, C7(p), FL	6.4nm

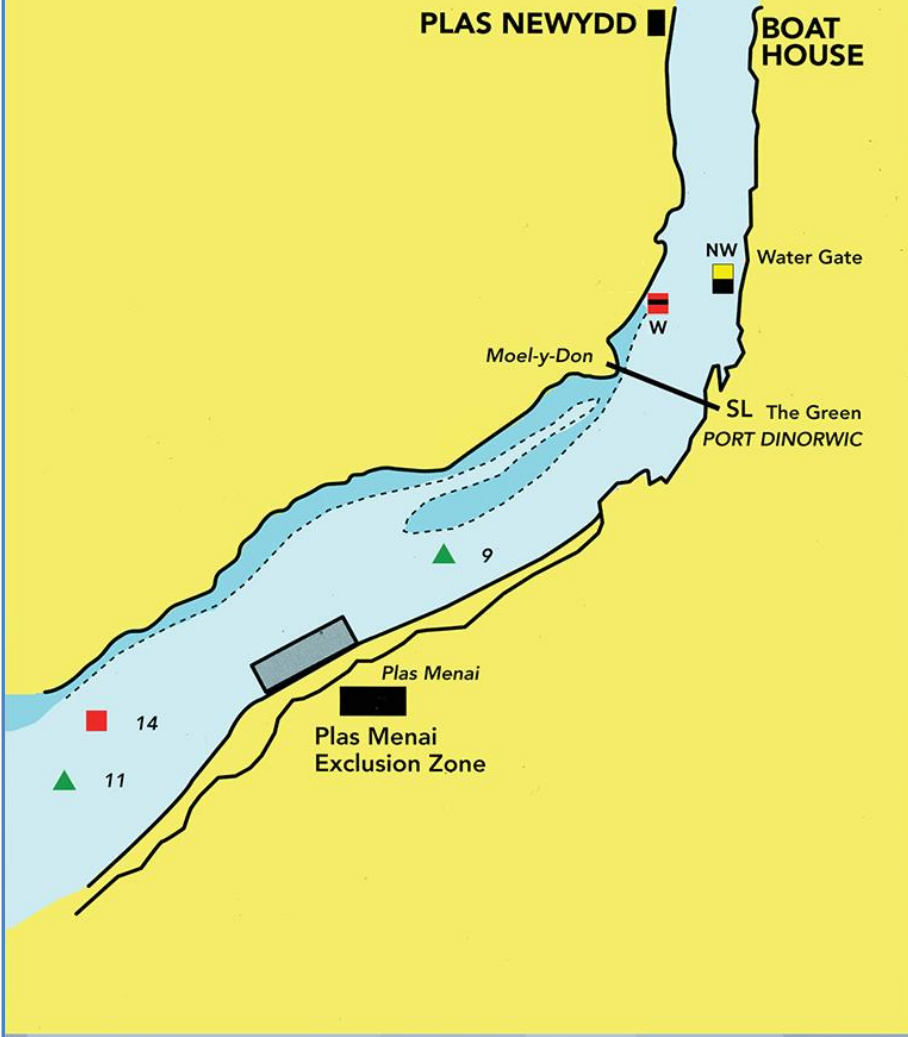
**COURSE 7**

1 to 6 inc.	SL, C8, C13(p), A, CH, FL	9.1nm
7, 8 & 9	SL, A, CH, C8, CH, FL	7.4nm
3, 10, 11 & 12 inc	SL, A, CH, C7(p), CH, FL	5.8nm

**COURSE 8**

1 to 6 inc.	SL, C13(p), C8, CH, C8, FL	9.2nm
7, 8 & 9	SL, C13(p), A, CH, C10(p), FL	7.8nm
3, 10, 11 & 12 inc	SL, C13(p), A, CH, C7(p), FL	7.0nm

# Marks & Buoys Port Dinorwic



# PORT DINORWIC

## Marks and Courses

<b>No9</b>	= Green Buoy off Llanfair Hall
<b>11</b>	= Green Buoy 11
<b>14</b>	= Red Buoy 14 opposite old Ferodo Factory
<b>NW</b>	= Yellow Pencil Buoy North side of the Dock entrance
<b>W</b>	= Red Buoy with Black Band near White Cottage.

**Exclusion Zone off Plas Menai:** No boat shall sail in a zone bounded by a line of outer moorings and ninety degrees to Plas Menai shore from each end. [see SI 16]

### START AND FINISH LINES

The Start and Finish Lines shall be a prolongation of an imaginary line between two flagpoles on the Sea Wall of Y Felinheli Green, the outer flagpole flying the starting signals.

**All Marks shall be left to *Port* unless otherwise stated.**

#### COURSE 1

1 to 6 inc	SL, 11(s), NW, 11(s), NW, FL	9.4nm
3, 7, 8 & 9	SL, 14(s), NW, 14(s), NW, FL	8.2nm
10 to 12 inc	SL, 14(s), W(s), No 9(s), W(s), FL	6.5nm

#### COURSE 2

1 to 6 inc	SL, NW, 11(s), NW, 11(s), FL	9.4nm
3, 7, 8 & 9	SL, NW, 14(s), NW, 14(s), FL	8.2nm
10 to 12 inc	SL, W(s), 14(s), W(s), No 9(s), FL	6.5nm

#### COURSE 3

1 to 6 inc	SL, 14(s), NW, 14(s), NW, FL	8.2nm
3, 7, 8 & 9	SL, 14(s), W(s), No 9(s), W(s), FL	6.0nm
10 to 12 inc	SL, No9(s), W(s), No 9(s), W(s), FL	5.6nm

#### COURSE 4

1 to 6 inc	SL, NW, 14(s), NW, 14(s), FL	8.2nm
3, 7, 8 & 9	SL, W(s), 14(s), W(s), No 9(s), FL	6.0nm
10 to 12 inc	SL, W(s), No 9(s), W(s), No 9(s), FL	5.6nm

#### COURSE 5

1, to 6 inc	SL, 11(s), NW, 11, NW(s), No9, NW(s), FL	12.3nm
3, 7, 8 & 9	SL, 14(s), NW,14, NW(s), No9, NW(s), FL	10.1nm
10 to 12 inc	SL, 14(s), W(s), 14, W, No9, W, FL	7.7nm

#### COURSE 6

1, to 6 inc	SL, NW, 11(s), NW, 11, NW(s), No9, FL	12.3nm
3, 7, 8 & 9	SL, NW, 14(s), NW, 14, NW(s), No9, FL	10.1nm
10 to 12 inc	SL, W(s), 14(s), W, 14, W, No9, FL	7.7nm

**COURSE 7**

1 to 6 inc

3, 7 to 12 inc

SL, No9(s), NW, FL – 4 Laps

SL, No9(s), W(s), FL – 4 Laps

2.4nm/lap

2.2nm/lap

**COURSE 8**

1, to 6 inc

3, 7 to 12 inc

SL, NW, No9(s), FL- 4 Laps

SL, W(s), No9(s), FL- 4 Laps

2.4nm/lap

2.2nm/lap