



Sportsmanship and the Rules

Competitors in the sport of sailing are governed by a body of rules that they are expected to follow and enforce. A fundamental principle of sportsmanship is that when competitors break a rule they will promptly take a penalty, which may be to retire.

1.0 RULES

- 1.1** These Regattas will be governed by the “rules” as defined in the Racing Rules of Sailing (RRS).
- 1.2** The Regatta Office is situated in the Royal Anglesey Yacht Club.
- 1.3** Notices to Competitors will be posted on the online official notice board located at menaistraitregattas.org.uk/notices. Whenever possible information will also be displayed on the Notice Board situated at the Start Line, the Regattas Facebook page and by text message.
- 1.4** Any change to sailing instructions will be posted on the official notice board not later than 2 hours before the start of the race to which they apply.
- 1.5** The term ‘Race Committee’ is the Race Committee of the host club for that day. The term ‘Race Officer’ means the Race Officer for any Regatta or his duly authorised representative.

2.0 CONDITIONS OF ENTRY

2.1 General – Risk Statement

Rule 3 of the Racing Rules of Sailing states: “The responsibility for a boat’s decision to participate in a race or to continue racing is hers alone.”

Sailing is by its nature an unpredictable sport and therefore inherently involves an element of risk. By taking part in the event, each competitor agrees and acknowledges that:

- (a) They are aware of the inherent element of risk involved in the sport and accept responsibility for the exposure of themselves, their crew and their boat to such inherent risk whilst taking part in the event.
- (b) They are responsible for the safety of themselves, their crew, their boat and their other property whether afloat or ashore.
- (c) They accept responsibility for any injury, damage or loss to the extent caused by their own actions or omission.
- (d) Their boat is in good order, equipped to sail in the event and they are fit to participate.
- (e) The provision of a race management team, patrol boats and other officials and volunteers by the event organiser does not relieve them of their own responsibilities.
- (f) The provision of patrol boat cover is limited to such assistance, particularly in extreme weather conditions, as can be practically provided in the circumstances.
- (g) It is their responsibility to familiarise themselves with any risks specific to this venue or this event drawn to their attention in any rules and information produced for the venue or event and to attend any briefing held for the event.
- (h) Their boat is adequately insured, with cover of at least £3,000,000 against third party claims.

2.2 Handicap

2.2a For **Fleets 1 & 3** the NHC base list will be used. A boat's handicap will not be adjusted after every race. An adjustment in handicap number is not grounds for redress (this changes RRS 62.1(a))

For **Fleets 1 & 3** the Race Committee, reserves the right to change which fleet an entry will compete in. For scoring purposes it will retain its Base Number.

2.2b For **Fleet 2** the MOCRA rating system will be used.

2.2c For **Fleets 13 & 14** the RYA Portsmouth Number (PN) List 2024 will be used. Boats without published PN will be allocated PN by the Race Committee.

2.3 **Sail Numbers** - Competitors should ensure that lost or damaged numbers are replaced and should inform the Race Officer if they intend to sail with a different sail number to that declared on their entry.

3.0 SCHEDULE OF REGATTAS

3.1 For each race the time of the warning signal for start 1 is shown below. Subsequent starts will be at 5 minute intervals.

3.2 The warning signal for start 0 (Fleets 1 and 2) will be 15 minutes before the time shown for start 1.

3.3 WEEK 1

Date	Regatta	Warning Signal	Start Line	HW
Mon 5 th Aug	Royal Dee Yacht Club	10:55	Beaumaris	12:22
Tue 6 th Aug	Bangor Town 1 st Race	10:55	Beaumaris	12.57
	Bangor Town 2 nd Race	13:25	Gazelle	
Wed 7 th Aug	Race Through	10:25	Beaumaris	13.30
Thu 8 th Aug	Royal Welsh YC - Seiont	11:25	Caernarfon	13.09
Fri 9 th Aug	Royal Welsh YC – Cadnant	11:55	Caernarfon	13.43
Sat 10 th Aug	Port Dinorwic Town	13:25	Y Felinheli	14.38

3.4 WEEK 2

Date	Regatta	Warning Signal	Start Line	HW
Mon 12 th Aug	Menai Bridge Long Dist'	12:25	Beaumaris	16.33
Tue 13 th Aug	Beaumaris Town	09:55	Beaumaris	17.29
Wed 14 th Aug	West Kirby SC	13:55	Beaumaris	18.41
Thu 15 th Aug	Royal Mersey YC	13:55	Beaumaris	07.19
Fri 16 th Aug	Conway YC	13:55	Beaumaris	08.37
Sat 17 th Aug	Royal Anglesey YC	10:55	Beaumaris	09.42

3.5 When AP over L is displayed the venue and start time of the race may be changed, please see the notice on the website or contact one of the patrol boats for details.

3.6 When N over C is displayed the first race is cancelled.

4.0 ENTRY

- 4.1a** All competitors, including late entrants, shall complete an online entry or a paper entry form before the start of race concerned.
- 4.1b** Late entries must be received by 1 hour prior to the start of their race, and if made on the day of the race, must be made online or at the starting line. (Dispensation may be given for valid reasons.)
- 4.1c** Competitors **under 18** shall obtain the approval of a parent or guardian for their entry.

4.2 ENTRY FEES

4.2a Up to 21st July 2024:

Fleet	1 to 12	13 & 14	age<18
12 days	£178	£89	£53
Any 6 days	£119	£60	£36
1-5 days & extra days over 6	£24/day	£12/day	£7/day

4.2b After 21st July 2024:

Fleet	1 to 12	13 & 14	age<18
12 days	£196	£98	£59
Any 6 days	£131	£65	£39
1-5 days & extra days over 6	£26/day	£13/day	£8/day

5.0 SAFETY

- 5.1a Personal Floatation** – RRS 40.2 will apply. **Note:** The Regatta Committee consider conditions on the Menai Strait require a personal ‘floatation device’ & advise that it is worn by all competitors in boats.
- 5.1b** Personal floatation shall be worn by all persons while using any of the club launches.
- 5.2 Patrol Boats** - Competitors are reminded that the primary duty of patrol boats is to save lives. Patrol boats must not be detained to stand by capsized boats when needed elsewhere for rescue work. The Regattas Committees of the organising Club or Regatta do their best to provide adequate patrol boats and facilities. This does not mean that a patrol boat will be available for every emergency and the helmsman and crew of every boat must decide upon their own responsibility whether to sail or not, and if they do, to accept all risks. Competitors, patrol boats and the Safety Officer will listen out on Channel 37.
- 5.3** All boats may be subject to scrutiny.
- 5.5 Signing on and off** – Competitors in **Fleets 13 & 14** shall sign on before the start of their race and sign off within 45 minutes of the last boat in their race finishing (unless extended by the Race Officer), otherwise they will be scored DNC (Did not Compete); this amends RRS A5.
The signing on/off point will be at or near the Start/Finish Line.

6.0 STARTING SIGNALS, RACE NUMBERS AND FLEET FLAGS

6.1 Starting Signals

6.1a Starting signals will be in accordance with RRS 26.

6.1b After a long postponement to alert boats that a race or sequence of races will begin soon, an orange flag will be displayed for at least five minutes, with one sound, before a warning signal is displayed. See RRS Appendix S 5.2.

6.2 When boats are OCS at the start and RRS 29.1 applies, the Race Officer may when possible identify affected boats on Channel 37. It remains each boat's responsibility to start correctly and absence of a radio message shall not be grounds for redress.

6.3 When a Start has a General Recall [RRS 29.2], all the fleets in that start will have a new start after all other starts are completed. Fleet flags will indicate the warning signal for the restart. This amends RRS 29.2.

6.4 Display of Code Flags

All boats in Fleets 1, 2 and 3 shall display their code flag on their backstays whilst racing.

6.5 Start sequence & Code Flags for Fleets

Start	Fleets		Flag
0	1 & 2	Cruiser, Keelboat Handicap NHC>0.81* Cruiser - Multihull -----	Num 1 & Num 2
1	4	Falcon One Design -----	B
2	6	Royal Anglesey Fife -----	F
3	5 & 7	Royal Mersey Mylne Conway One Design -----	E & G
4	8	Menai Strait One Design -----	J
5	11 & 12	Hoylake Opera West Kirby Star -----	Q & R
6	13 & 14	Handicap Dinghy PN>=1178 Handicap Dinghy PN<1178 -----	T & W

Notes:

The split point between Fleet 1 & Fleet 3 is:

Fleet 1: NHC above 0.81 and longer than 6.5 metres

Fleet 3: NHC up to 0.81 or shorter than 6.5 metres

For all regattas the warning signal for start 0 (Fleets 1 and 2) will be 15 minutes before the time shown for start 1.

At Y Felinheli/Port Dinorwic Fleets 13 & 14 will have separate starts 5 minutes apart.

6.6 Alternate Start Sequence for Beaumaris Town Regatta, and Race To Caernarfon.

Start	Fleets		Flag
0	1 & 2	Cruiser, Keelboat Handicap NHC>0.81* Cruiser - Multihull -----	Num 1 & Num 2
1	13	Handicap Dinghy PN>=1178 -----	T
2	11 & 12	Hoylake Opera West Kirby Star -----	Q & R
3	8	Menai Strait One Design -----	J
4	5 & 7	Royal Mersey Mylne Conway One Design -----	E & G
5	4	Falcon One Design -----	B
6	14	Handicap Dinghy PN<1178 -----	W
7	6	Royal Anglesey Fife -----	F

7.0 COURSES

7.1a General instructions for the courses at each venue are contained in the Marks and Courses section and apply to all Fleets 1 to 14.

7.1b All marks are to be treated as ‘rounding marks’ for the purpose of RRS Definition of “Sail the Course” unless stated otherwise.

7.2 The course for **Fleets 1 to 12** will be indicated by means of course boards displayed at the Start Line showing a numeral from 1 to 20 or the letter X. The numeral course boards refer to the course configuration and description for the particular venue as set out in Marks and Courses. When X is displayed the course will be defined according to the method explained in the Beaumaris Marks and Courses. The course boards will be displayed before the Warning Signal of the race and may change between starts. **NOTE:** The course with the same number may not be the same for each fleet.

7.3 The course for **Fleets 13 & 14** will be displayed at the signing on point.

7.4 RACE THROUGH - No course or course boards will be displayed. The course for all fleets is given on The Race Through course page

7.5 START AND FINISH LINES

7.5a The Start and Finish Lines for each venue are defined in ‘Marks and Courses’.

7.5b Competitors shall, before their preparatory signal and after completing their course keep clear of all boats and of **the start and finish lines**. Offending boats may be protested by the Race Officer.

8.0 SHORTENED COURSE (Amending RRS 32 and Race Signals)

8.1 General: When “S” is displayed alone it applies to all Fleets

8.2 **Fleet flags** will be used to shorten courses for the individual fleets as normal regatta practice. Fleet flags may be displayed under the flag S or on an adjacent halyard [when shortening this allows a different halyard to be used instead of all flags on one hoist].

8.3 If “S” over “Z” is displayed in the vicinity of a mark of the course, boats should round that mark and proceed to the FL.

8.4 The race committee has the option to shorten course between a rounding mark, passing mark, or an orange pencil buoy laid for that purpose and a boat staff displaying flag “S”.

8.5 **Race to Caernarfon** - Procedures for shortening course are described in the Race Through course page.

9.0 TIME LIMITS (Amending RRS 35)

9.1 **Time Limits – All Fleets:** The time limit for each race will be FOUR HOURS, provided that when the first boat finishes within the time limit, the time limit will be extended by one hour. Boats which have not finished within the time limit will be scored DNF (Did Not Finish). If no boat crosses the finish line within the time limit, the Race Officer may at his discretion place and award prizes in the order in which they last crossed the line, provided they are still making all reasonable effort to sail their course.

9.2 The time limit will be **five hours** for the Menai Bridge Long Distance Race & the Beaumaris Town Regatta Round Puffin Island Race only. The same time limit extension as SI 9.1 will apply.

10.0 **RETIREMENT** - Helmsmen shall report their retirement to the Race Officer within 90 minutes of the finish of their race.

11.0 PENALTIES and PROTESTS

11.1 For Fleet 7 ONLY (Conway One Design) the Two Turn Penalty will be replaced by a One Turn Penalty, this amends RRS 44.1

11.2 Details and time of protest hearings will be posted on the official notice boards in the RAYC and the Regatta Website. No other notification will be given.

11.3 **Protests (Amending RRS 61.3)**

For the purpose of RRS 61.3 formal Protest in writing shall be delivered to the Regatta Office within 2 hours of arriving on shore. The protest committee will extend this time limit to a maximum of 6 hours only if the delay is due to the need to return from a remote venue.

12.0 PRIZES

12.1 Prizes for **Fleets 1 to 12** will be awarded daily as follows:

To the winning boat in each fleet.

2nd prize if 3 or more starters.

3rd prize if 5 or more starters.

12.2 Prizes for **Fleets 13 & 14**

1st, 2nd & 3rd prizes will be awarded in each fleet.

12.3 If 6 or more boats of one class sail in Fleets 1, 2, 3, 13 or 14 they shall rank as a fleet-within-a-fleet with separate prizes.

- 12.4 NOTE - All trophies and prizes must be collected; they cannot be posted.**
- 13.0 SAIL OVER** - In any fleet, on any day when only one boat from a fleet starts a race, a sail over may be awarded and the boat shall qualify for a prize and any relevant daily trophy. Series points will also be awarded.
- 14.0 SCORING**
- 14.1** Scoring will be in accordance with RRS Appendix A. A5.3 will apply (scoring of boats that came to the starting area).
- 14.2a** The results of the Menai Strait Regatta series shall be based on the results of the 12 daily Regattas listed in SI 3. Using RRS Appendix A2.1
- 14.2b** When a Daily Regatta has more than 1 race the results of those races shall be combined as a series using RRS Appendix A2 & A8 with no discard. This series result shall be used to determine the prize winners for that daily regatta and for the Menai Strait Regatta Series results. A boat that does not start will be awarded points as per Appendix A5.2.
- 14.2c** For **each Weekly Series** 1 discard will be permitted after 4 races.
- 14.2d** For **the Fortnightly Series** 1 discard will be permitted after 4 races, 2 after 7 races and 3 after 9 races.
- 14.3 Particular Trophies** - Particular trophies are awarded using the applicable scoring systems. For further information (not listed below) contact the Regatta Office.
- 14.4 Series Scoring Variations**
- Fleet 4: Fred Falcon is scored Saturday to Saturday as a weekly series.
- Fleet 5: Mylne series are scored without discards.
- Fleet 11: Opera
- Each weekly series – a second discard will be permitted after 6 races.
 - The fortnight series will be scored with a maximum of 6 races to count.
 - DNF or RET will score points for the finishing place equal to the number of boats that came to the starting area (amends RRS A5.3).
- 15.0** Exclusion Zone off Plas Menai: No boat shall sail in a zone bounded by a line of outer moorings and ninety degrees to Plas Menai shore from each end.
- 16.0** All chartlet are for Guidance only and NOT to be used for Navigation purposes

Let with us

Do you currently own or are considering investing in a holiday let in the **North Wales** area? Menai Holiday Cottages can help! Come and join over **800** property owners working with Menai Holiday Cottages!



Bookings: Many of our property owners achieve more than 45 bookings a year and over 200 days booked



Support: 24/7 support to all our owners and customers



Marketing: Your property will be seen by millions of potential guests



Handling: Full property management services available



Partners: We work with 500 partner sites such as Airbnb and Booking.com



Call our local team on **01248 665149** and or email newowners@menaiholidays.co.uk to find out how we can help

Menai
Holiday Cottages



Abersoch
Quality Homes

Part of the  **SYKES HOLIDAY COTTAGES** family

MARKS AND COURSES

General Abbreviations

- FL = Finish Line
(p) = Leave or pass to Port
(s) = Leave or pass to Starboard
SL = Start Line
LM = Limit Mark

NOTE: Green Channel Buoys are odd numbers, Red Buoys are even.

BEAUMARIS MARKS

Marks & Buoys

- LM = Two Orange limit marks or buoys off the start line
10ft = 10ft Bank Buoy (Channel Buoy)
Din = Dinmor Buoy (Channel Buoy)
A = Aber (Blue Barrel)
BO = Bangor Outfall Buoy [yellow]
B = Bangor Pier Navigation Buoy [Red]
C = Cadnant (Blue Barrel)
F = Fryars Bay (Green Conical Outfall Buoy)
G = George (Blue Barrel)
HW = Hwfa (Blue Barrel)
K = Castle (Blue Barrel)
MA = Magdalene (Blue Barrel)
N = Nwy (Orange Marker Buoy for Gas Co.)
O = Ogwen (Blue Barrel)
PI = Puffin Island
PM = Penrhyn Mussel (Yellow Navigation Post)
PP = Penmon Perch
PS = Penmaen Swatch (an inflatable orange or yellow mark)
TPS = Through Puffin Sound (a gate as a line between the Lighthouse and the perch)
WK = Wreck (an inflatable orange or yellow mark)
TR = Trecastell (an inflatable orange or yellow mark)

When X is displayed the course will be indicated by a series of numbers and/or letters to be read from left to right, indicating the buoys and racing marks to be rounded in the order displayed and as per their colour, red left to port and green to starboard and the race shall be four laps.

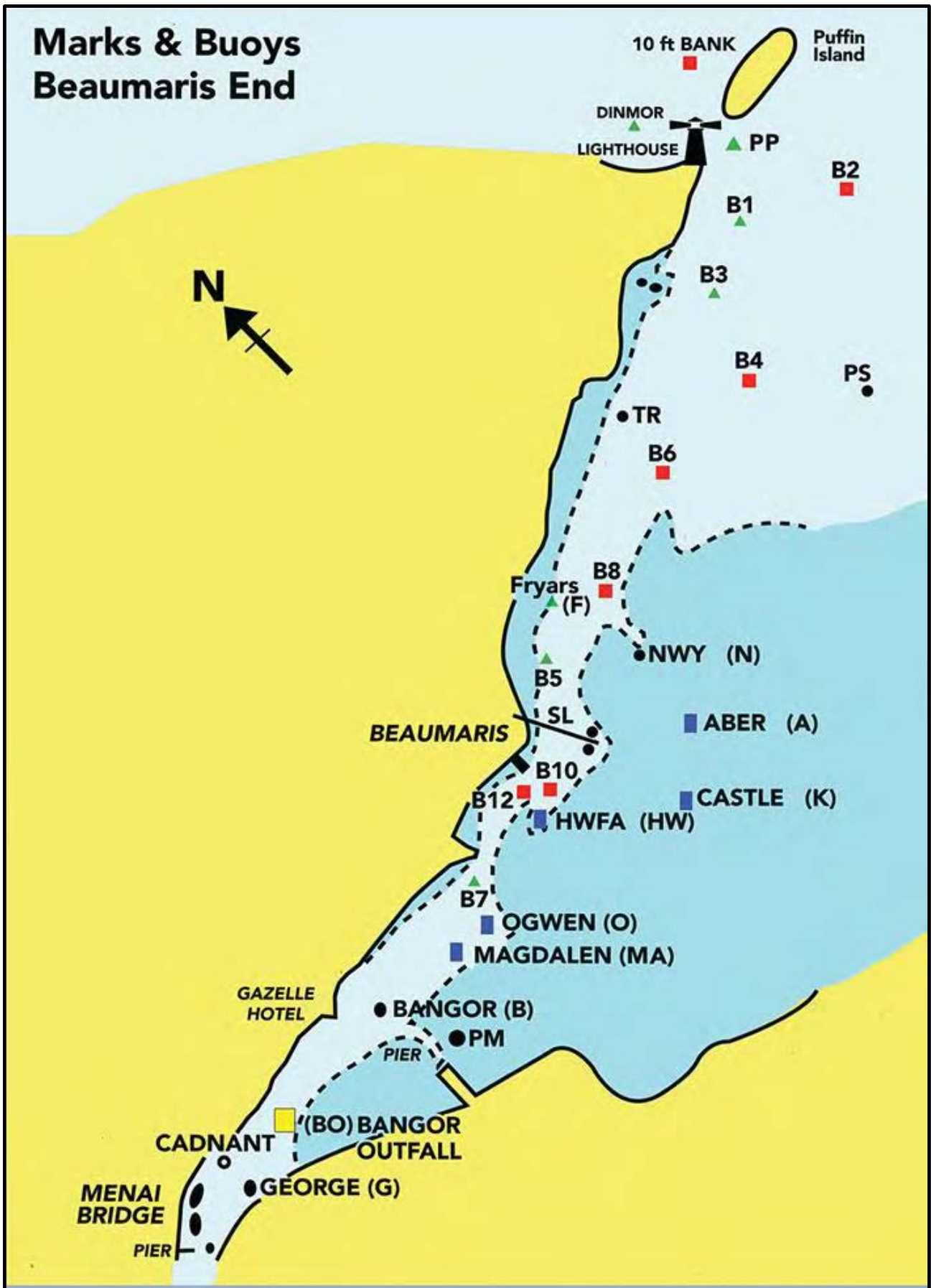
All marks shall be left to Starboard unless otherwise stated.

START AND FINISH LINES - BEAUMARIS

Start and Finish Line shall be a prolongation of a line formed by two flagpoles, in transit, on Beaumaris Green and limited by two orange marks (LM) moored in the Swatchway either side of the transit line. At the start and finish only the courseward limit mark shall apply and shall be passed on the Anglesey side.

When a leg of a course is between two marks on opposite sides of the start/finish transit it shall pass to the Anglesey side of the limit marks except where the course states otherwise.

Marks & Buoys Beaumaris End



BEAUMARIS

Marks and Courses

COURSE 1

1 & 2	X Course	
4 to 6 inc.	SL, B3(p), B7, B6(p), B10, FL	12.0 NM
7, 8 & 9	SL, B3(p), O, F(p), B12, FL	9.5 NM
3, 10 to 12 inc.	SL, B6(p), MA, B8(p), B10, FL	8.5 NM

COURSE 2

1 & 2	X Course	
4 to 6 inc.	SL, B8(p), O, B8(p), O, FL	8.0 NM
7, 8 & 9	SL, B8(p), B12, F(p), B12, FL	5.5 NM
3, 10 to 12 inc.	SL, B8(p), B10, B8(p), B10, FL	4.5 NM

COURSE 3

1, 2, 4 to 9 inc.	SL, MA, then passing LM to p, B4(p), FL	9.6 NM
3, 10 to 12 inc.	SL, O, then passing LM to p, B6(p), FL	7.9 NM

COURSE 4

1, 2, 4 to 9 inc.	SL, B4, then passing LM to s, MA, FL	9.6 NM
3, 10 to 12 inc.	SL, B6, then passing LM to s, O, FL	7.9 NM

COURSE 5

1 & 2	X Course	
4 to 6 inc.	SL, BO, B8(p), BO, B8(p), FL	11.5 NM
7, 8 & 9	SL, MA, B8(p), O, B8(p), FL	8.0 NM
3, 10 to 12 inc.	SL, MA, B8(p), B12, B8(p), FL	7.0 NM

COURSE 6

1, 2, 4 to 9 inc.	SL, HW(p), K(p), & passing LM to p, B6(p), FL	6.2 NM
3, 10 to 12 inc.	SL, HW(p), passing LM & A to p, B8(p), FL	5.6 NM

COURSE 7

1, 2, 4 to 6 inc.	SL, MA, B6(p), O, B8(p), FL	9.5 NM
7, 8 & 9	SL, O, F(p), B12, F(p), FL	6.5 NM
3, 10 to 12 inc.	SL, O, F(p), B10, B8(p), FL	6.0 NM

COURSE 8

1 & 2		
4 to 6 inc.	SL, B6(p), O, B6(p), O, FL	10.5 NM
7, 8 & 9	SL, B6(p), B12, F(p), B12, FL	7.0 NM
3, 10 to 12 inc.	SL, B6(p), B10, B8(p), B10, FL	6.0 NM

COURSE 9

1 & 2	X Course	
4 to 6 inc.	SL, B2(p), B10, B1(p), FL	13.0 NM
7, 8 & 9	SL, B2(p), B10, B6(p), FL	10.4 NM
3, 10 to 12 inc.	SL, B6(p), B10, B6(p), FL	7.8 NM

COURSE 10 1 & 2 3 to 12 inc.	(Special Course for Beaumaris Town Only) SL, passing B2 to(s) TPS, Din, 10ft, TPS, FL SL, passing B2 to(s) TPS, Din, 10ft, then round Puffin Island, passing B6 to(p), FL	9.5 NM
COURSE 11 1 to 12 inc.	(Special Course for Beaumaris Town Only) SL, passing B2 to(s) TPS passing Penmon Perch & Puffin Island all to Starboard, passing B6 to(p), FL	8.5 NM
COURSE 12 1 & 2 3 to 12 inc.	(Special Course for Beaumaris Town Only) SL, passing B2 to(s) TPS, Din, 10ft, TPS, FL SL, passing B2 to(s) TPS passing Penmon Perch & Puffin Island all to Starboard, passing B6 to(p), FL	9.0 NM 8.5 NM
COURSE 13 1 to 12 inc.	(Special Course for Beaumaris Town Only) SL, passing B4 to(s), passing Penmon Perch to (p), Puffin Island (p), passing B6 to(p), FL	8.5 NM
COURSE 14 1 to 12 inc.	SL, HW(p), K(p), passing LM to (p), A(p), F(p), FL x 4Laps	2.3 NM/lap
COURSE 15 1 to 12 inc.	SL, O, passing LM to (p), N(p), F(p), FL x 4Laps	4.1 NM/lap
COURSE 16 1 to 12 inc.	SL, F, A, passing LM to s, K, HW, FL x 4 Laps	2.3 NM/lap
COURSE 17 1 & 2 3 to 12 inc.	SL, B6(p), O, FL x 3 Laps SL, N(p), F(p), B7, FL x 4 Laps	
COURSE 18 1 & 2 4, to 6 inc. 7. 8 & 9 3, 10, 11 & 12	(Special Course for Menai Bridge Long Distance Only) X Course SL, G, O, BO, F(p), FL SL, C(p), MA, B, F(p), FL SL, C(p), MA, B, NW(p), FL	9.8nm 8.3nm 6.9nm
COURSE 19 1 & 2 4 to 6 inc 7, 8 & 9 3, 10 11 & 12	(Special Course for Menai Bridge Long Distance Only) X Course SL, G, O, B, NW(p), FL SL, C(p), MA, B, B5(p), FL SL, G, O, MA, B5(p), FL	8.4nm 7.0nm 6.3nm
Course 20 1 & 2 4 to 6 inc 7 to 9 inc 3, 10 to 12 inc	(Special Course for Menai Bridge Long Distance Only) X Course SL, C(p), O, B, 5, FL SL, BO, 7, MA(p), 8, FL SL, M, 7, M, 8, FL	9.5 nm 7.0 nm 5.4 nm

BANGOR

Marks and Courses

C = Cadnant (Blue Barrel)
G = George (Blue Barrel)
HW = Hwfa (Blue Barrel)

BO = Bangor Outfall Buoy [yellow]
O = Ogwen (Blue Barrel)
MA = Magdalene (Blue Barrel)

All marks shall be left to Port unless otherwise stated.

START AND FINISH LINES

Bea SL & Bea FL are the Beaumaris Start & Finish Lines as described on the Beaumaris page.
Gaz SL & Gaz FL shall be the prolongation of a line formed by two flagpoles on Glyn Garth Jetty.

1st Race - Courses

COURSE 1

1, 2, 4 to 8 inc.	Bea SL, C, 12, Gaz FL	7.3nm
3, 9 to 12 inc.	Bea SL, G(s), 7(s), Gaz FL	6.3nm

COURSE 2

1, 2, 4 to 8 inc.	Bea SL, C, O, Gaz FL	5.7nm
3, 9 to 12 inc.	Bea SL, G(s), MA, Gaz FL	5.3nm

COURSE 3

1, 2, 4 to 8 inc.	Bea SL, BO, O, Gaz FL	4.4nm
3, 9 to 12 inc.	Bea SL, BO, MA, Gaz FL	4.0nm

2nd Race - Courses

COURSE 1

1, 2, 4 to 8 inc.	Gaz SL, B10, G, O, Gaz FL	7.4nm
3, 9 to 12 inc.	Gaz SL, B12, C(s), MA, Gaz FL	6.6nm

COURSE 2

1, 2, 4 to 8 inc.	Gaz SL, G, B10, G, O, Gaz FL	9.6nm
3, 9 to 12 inc.	Gaz SL, C(s), B12, C(s), MA, Gaz FL	8.8nm

COURSE 3

1 to 6 inc.	Gaz SL, BO, B7, Gaz FL	3.1nm
7 to 12 inc.	Gaz SL, BO, MA, Gaz FL	2.1nm

COURSE 4

1, 2, 4 to 8 inc.	Gaz SL, B8, BO, O, Gaz FL	8.0nm
3, 9 to 12 inc.	Gaz SL, HW, BO, MA, Gaz FL	6.8nm

COURSE 5 [NB Beaumaris Finishing Line]

1, 2, 4 to 8 inc.	Gaz SL, O, G, B8, B10, Bea FL	7.7nm
3, 9 to 12 inc.	Gaz SL, MA, C(s), HW, B10, Bea FL	5.9nm

COURSE 6

1, 2, 4 to 8 inc.

Gaz SL, G, O, Gaz FL x 4 Laps

4.2 NM/lap

3, 9 to 12 inc.

Gaz SL, C, MA, Gaz FL x 3 Laps

3.7 NM/lap

COURSE 7

1, 2, 4 to 8 inc.

Gaz SL, O, G, Gaz FL x 4 Laps

4.2 NM/lap

3, 9 to 12 inc.

Gaz SL, MA, C, Gaz FL x 3 Laps

3.7 NM/lap

THE RACE THROUGH Beumaris to Caernarfon

START AND FINISH LINES

The Start Line shall be the Beumaris Start Line as described on the Beumaris page.

The Finish Line at Caernarfon shall be the prolongation of a line through two Orange Triangles on the Royal Welsh Yacht Club Barbican.

COURSES

FLEETS 1 - 12 inclusive

From Start Line at Beumaris south-westerly through the Menai Strait to the Finish Line at Caernarfon passing Green Conical Buoy C9 to starboard. [11.5nm]

Shortening Course at Menai Bridge

Code flag S will be displayed from the Menai Bridge Promenade accompanied by two sound signals. The finishing line will be a line across the Menai Strait from the pier pontoon post to the Normal college building gable end. For reasons of safety all boats should expect to wait near Menai Bridge Pier in readiness to be towed to Caernarfon. They should not continue into the Swellies unless directed by a patrol boat.

Shortening course at Y Felinheli

Code flag S will be displayed at the Port Dinorwic Sailing Club finishing line accompanied by two sound signals. The finishing line will be the Port Dinorwic Sailing Club finishing line. All boats should expect to wait off Y Felinheli for a tow unless the individual boat's skipper decides that it is safe to proceed alone to Caernarfon or is directed to proceed by a patrol boat.

SPECIAL CONDITIONS

1. SPINNAKERS

Spinnakers shall not be flown in the Swellies between the Suspension Bridge and Britannia Bridge.

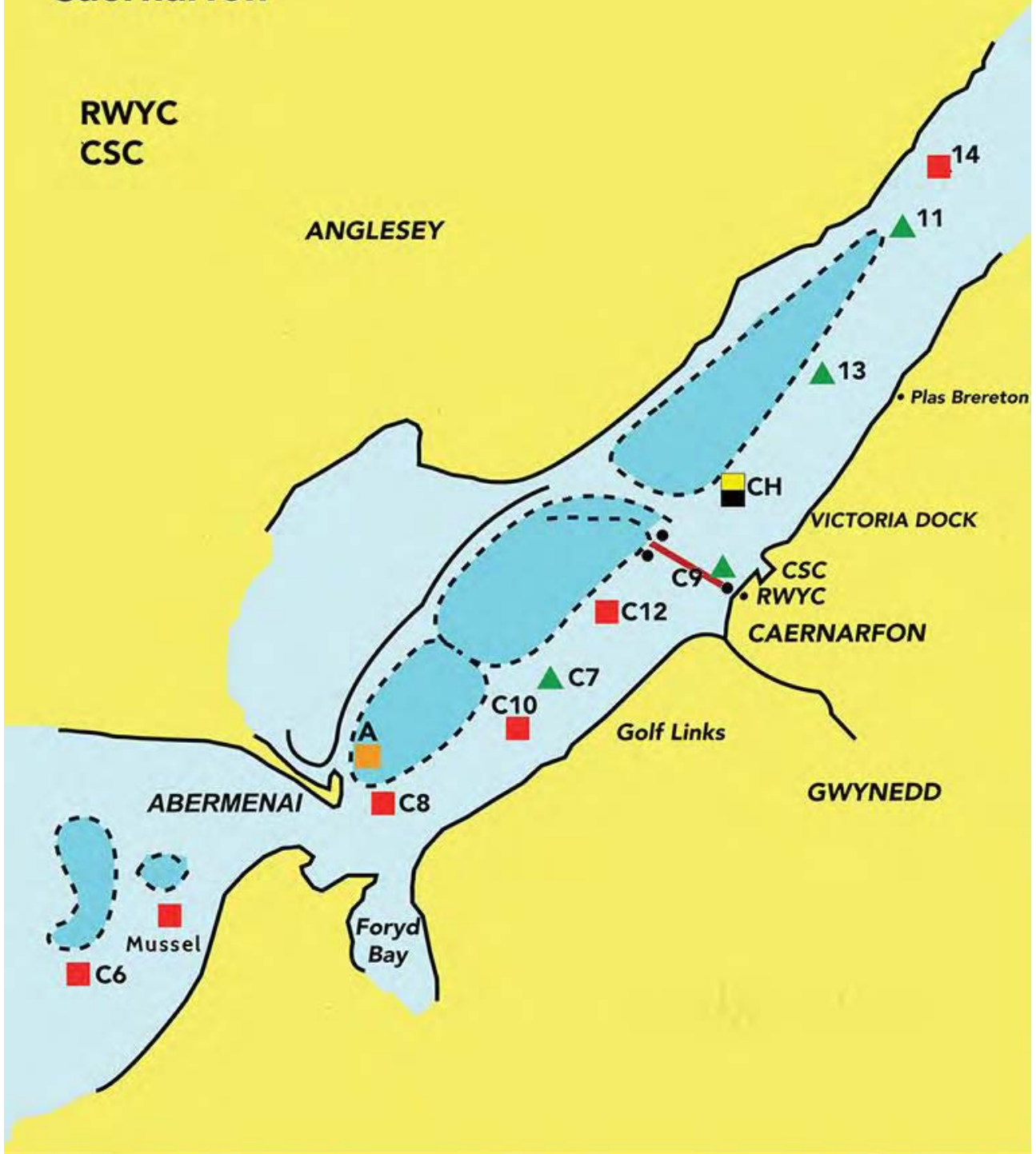
2. RETIREMENTS (Amending Sailing Instruction 12)

Retirements shall be reported to the Race Officer at Caernarfon as soon as possible and immediately on coming ashore, in person, by radio on Channel 37/M1, by phone to Royal Welsh Yacht Club 01286 672599, or using mobile numbers listed on the 'Races to Caernarfon' Day Page.

3. Exclusion Zone off Plas Menai: No boat shall sail in a zone bounded by a line of outer moorings and ninety degrees to Plas Menai shore from each end (see SI 16)

Marks & Buoys Caernarfon

RWYC
CSC



CAERNARFON

Marks and Courses

- CH** = Yellow and Black Change Buoy off Victoria Dock
- C6** = Red Buoy C6 beyond Belan Gap
- C7** = Green Buoy C7 off Golf Course
- C8** = Red Buoy C8 near Aber Menai
- No9** = Green Buoy No9 (off Plas Llanfair)
- C10** = Red Buoy
- C11** = Green Buoy 11
- C13** = Green Buoy 13 opposite Plas Brereton
- C14** = Red Buoy 14 opposite old Ferodo Factory
- C9** = Green Buoy near start line
- A** = *Orange buoy laid off Aber Menai (approx. 53° 08'N 04° 19'W)*

All marks shall be left to Starboard unless otherwise stated.

Exclusion Zone off Plas Menai: No boat shall sail in a zone bounded by a line of outer moorings and ninety degrees to Plas Menai shore from each end. [see SI 16]

START AND FINISH LINES

The Start and Finish Lines shall be the prolongation of a line between two Orange Triangles on the Royal Welsh Yacht Club Barbican and limited by two orange outer Limit Marks and one inner Limit Mark, [inshore of Green Buoy C9], all moored approximately on the transit. At the start and finish only the courseward outer limit mark shall apply and shall be passed on the Gwynedd side.

When a leg of a course is between two marks on opposite sides of the start/finish transit it shall pass to the Gwynedd side of the limit marks except where the course states otherwise.

Green Buoy C9 and the Red Perch on the Porth Yr Aur slipway, although close to the Start Line, are not part of it.

COURSE 1

1 to 6 inc.	SL, C8, CH, C10(p), CH, FL	6.4nm
7, 8 & 9	SL, A, CH, C10(p), CH, FL	6.2nm
3, 10, to 12 inc.	SL, C10(p), CH, C7(p), CH, FL	4.8nm

COURSE 2

1 to 6 inc.	SL, C13(p), C8, FL	5.4nm
7, 8 & 9	SL, C13(p), A, FL	5.2nm
3, 10, to 12 inc.	SL, C13(p), C7(p), FL	3.8nm

COURSE 3

1 to 6 inc.	SL, C8, CH, C8, CH, FL	7.6nm
7, 8 & 9	SL, A, CH, C7(p), CH, FL	5.8n3
3, 10, to 12 inc.	SL, A, CH, C7(p), CH, FL	4.8nm

COURSE 4

1 to 6 inc.	SL, C13(p), C8, CH, C7(p), FL	7.6nm
7, 8 & 9	SL, C13(p), C10(p), CH, C7(p), FL	6.4nm
3, 10, to 12 inc	SL, C13, C7(p), CH, C12, FL	5.4nm

COURSE 5

1 to 6 inc.	SL, C8, C13(p), C8, CH, FL	9.3nm
7, 8 & 9	SL, A, CH, C10(p), CH, FL	6.2nm
3, 10, to 12 inc	SL, A, CH, C7(p), CH, FL	5.8nm

COURSE 6

1 to 6 inc.	SL, C13(p), C8, CH, C8, FL	9.2nm
7, 8 & 9	SL, C13(p), A, CH, C7(p), FL	7.4nm
3, 10, to 12 inc	SL, C13(p), C10(p), CH, C7(p), FL	6.4nm

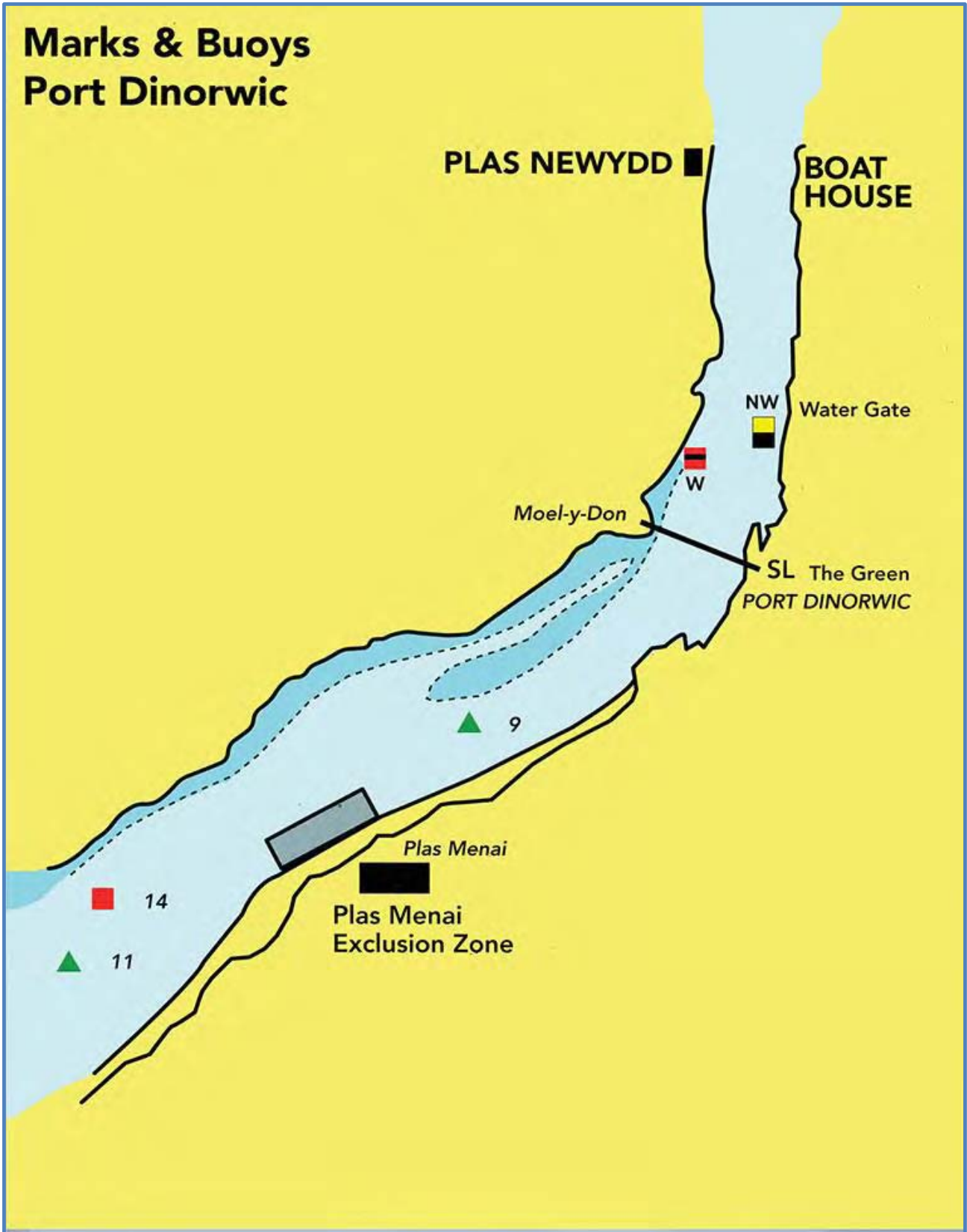
COURSE 7

1 to 6 inc.	SL, C8, C13(p), A, CH, FL	9.1nm
7, 8 & 9	SL, A, CH, C8, CH, FL	7.4nm
3, 10, to 12 inc	SL, A, CH, C7(p), CH, FL	5.8nm

COURSE 8

1 to 6 inc.	SL, C13(p), C8, CH, C8, FL	9.2nm
7, 8 & 9	SL, C13(p), A, CH, C10(p), FL	7.8nm
3, 10, to 12 inc	SL, C13(p), A, CH, C7(p), FL	7.0nm

Marks & Buoys Port Dinorwic



PORT DINORWIC

Marks and Courses

No9	= Green Buoy off Llanfair Hall
11	= Green Buoy 11
14	= Red Buoy 14 opposite old Ferodo Factory
NW	= Yellow Pencil Buoy North side of the Dock entrance
W	= Red Buoy with Black Band near White Cottage.

All Marks shall be left to Starboard unless otherwise stated.

Exclusion Zone off Plas Menai: No boat shall sail in a zone bounded by a line of outer moorings and ninety degrees to Plas Menai shore from each end. [see SI 16]

START AND FINISH LINES

The Start and Finish Lines shall be a prolongation of an imaginary line between two flagpoles on the Sea Wall of Port Dinorwic Green, the outer flagpole flying the starting signals.

COURSE 1

1, to 6 inc	SL, 11, NW(p), 11, NW(p), FL	9.4nm
3, 7, 8 & 9	SL, 14, NW(p), 14, NW(p), FL	8.2nm
10 to 12 inc	SL, 14, W, No 9, W, FL	6.5nm

COURSE 2

1 to 6 inc	SL, NW(p), 11, NW(p), 11, FL	9.4nm
3, 7, 8 & 9	SL, NW(p), 14, NW(p), 14, FL	8.2nm
10 to 12 inc	SL, W, 14, W, No 9, FL	6.5nm

COURSE 3

1 to 6 inc	SL, 14, NW(p), 14, NW(p), FL	8.2nm
3, 7, 8 & 9	SL, 14, W, No 9, W, FL	6.0nm
10 to 12 inc	SL, No9, W, No 9, W, FL	5.6nm

COURSE 4

1 to 6 inc	SL, NW(p), 14, NW(p), 14, FL	8.2nm
3, 7, 8 & 9	SL, W, 14, W, No 9, FL	6.0nm
10 to 12 inc	SL, W, No 9, W, No 9, FL	5.6nm

COURSE 5

1, to 6 inc	SL, 11, NW(p), 11, NW(p), No9, NW(p), FL	12.3nm
3, 7, 8 & 9	SL, 14, NW(p), 14, NW(p), No9, NW(p), FL	10.1nm
10 to 12 inc	SL, 14, W, 14, W, No9, W, FL	7.7nm

COURSE 6

1, to 6 inc	SL, NW(p), 11, NW(p), 11, NW(p), No9, FL	12.3nm
3, 7, 8 & 9	SL, NW(p), 14, NW(p), 14, NW(p), No9, FL	10.1nm
10 to 12 inc	SL, W, 14, W, 14, W, No9, FL	7.7nm

COURSE 7

1 to 6 inc

3, 7 to 12 inc

SL, No9, NW(p), FL – 4 Laps

SL, No9, W, FL – 4 Laps

2.4nm/lap

2.2nm/lap

COURSE 8

1, to 6 inc

3, 7 to 12 inc

SL, NW(p), No9, FL- 4 Laps

SL, W, No9, FL- 4 Laps

2.4nm/lap

2.2nm/lap